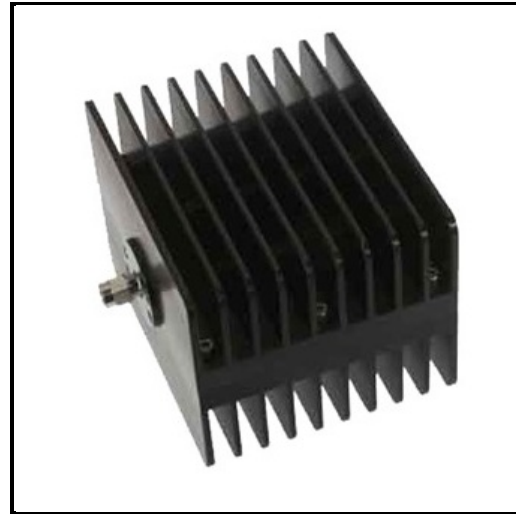


Product Features

P1AT-29MF-40G20W-20 is a 50 Ohm fixed value 20dB RF attenuator. The attenuator has 2.92mm male to 2.92mm female connectors and operates DC to 40 GHz with a max VSWR 1.30. Power handling is 20 Watts.

Attenuation accuracy is +/- 1.5 dB.

The connectors are passivated stainless steel and the heat sink is aluminum, black anodized.



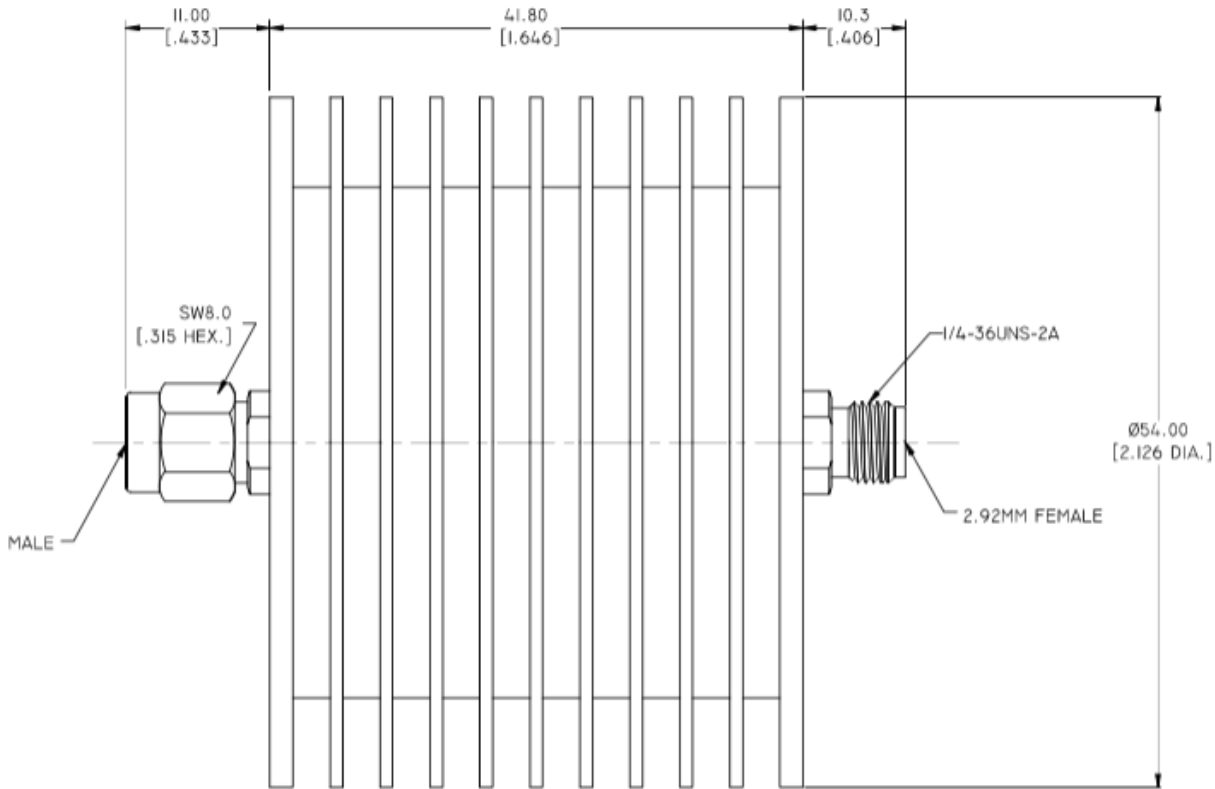
Electrical Specification: T_{Ambient} = 25° C

Parameter	Frequency Range	Units	Min	Typical	Max	Notes
Frequency Range		GHz	DC		40.0	

Mechanical And Environmental Specifications:

Parameter	Description	Notes
Connector 1	2.92mm Male	
Connector 2	2.92mm Female	
RoHS Compliance	Yes	

Drawing



Product Notes

Operating temp range is -55 to +125 deg C.

Peak power handling: 200W (5 microsecond pulse width, 5 % duty cycle).

Typical lead time is 4 weeks.