

Product Features

P1CO-29FEL-05/09-LP is a 2.92mm female (jack) 50 Ohm connector that operates to 40 GHz. It is a low profile edge launch connector that offers best electrical match when mating with Microstrip printed circuit boards. This 40 GHz connector is field replaceable (non- solder attachment to PCB). The connector material is passivated stainless steel.

Dimension (A) Board: The center contact (pin) diameter is .005 inch (0.13mm).

Dimension (B) Internal : The internal pin diameter is .009 inch (0.23mm).

Dimension (C) Dielectric: The dielectric diameter is .029 inch (0.74mm).



Compare to 1092-01A-6.

Electrical Specification: T Ambient = 25° C

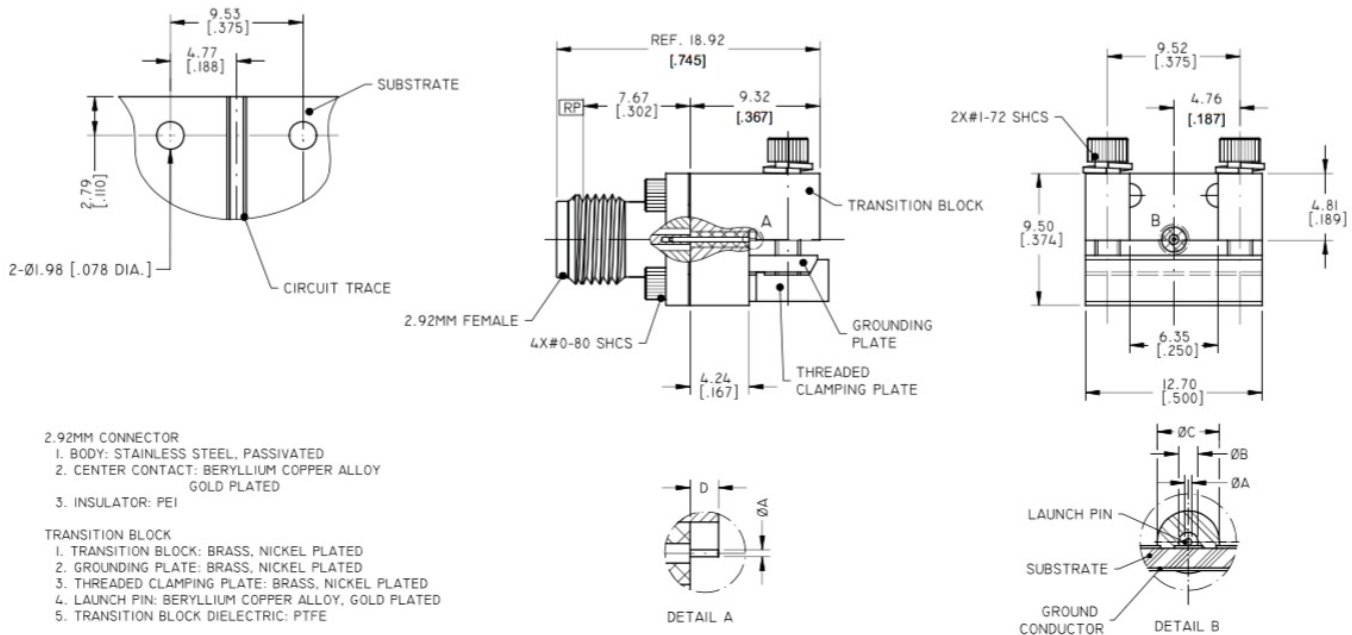
Parameter	Frequency Range	Units	Min	Typical	Max	Notes
Frequency Range		GHz	DC		40	
Impedance				50.0		

Mechanical And Environmental Specifications:

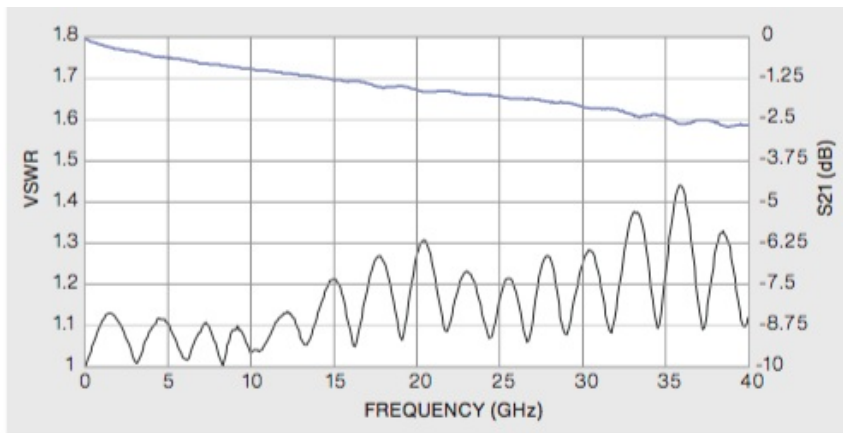
Parameter	Description	Notes
RoHS Compliance	Yes	

Drawing

2.92mm female end launch PCB connector, low profile, .005 inch (0.13mm) diameter pin. Frequency DC to 40 GHz. Low profile.



Graph



Product Notes