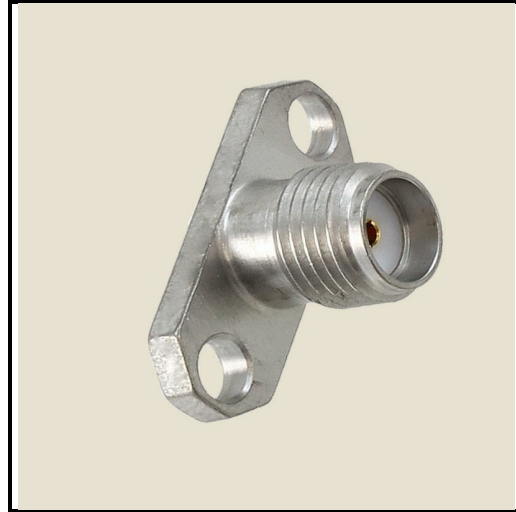


P1CO-SAF2-F015-27G

Connector, SMA Female, 2-Hole Panel Mount, Field Replaceable, Socket for .015 Pin, 27 GHz. Limited to stock on hand.

Product Features



Electrical Specification: $T_{\text{Ambient}} = 25^{\circ}\text{C}$

Parameter	Frequency Range	Units	Min	Typical	Max	Notes
Frequency Range		GHz	DC		27.0	
Impedance				50.0		

Mechanical And Environmental Specifications:

Parameter	Description	Notes
RoHS Compliance	Yes	

Product Notes