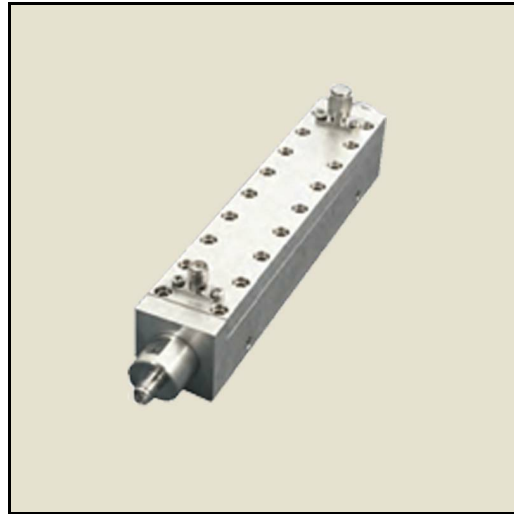


RF coaxial 10 dB Directional Coupler frequency from 500 MHz to 18 GHz. Power up to 10 Watts, with SMA female connectors. Limited to stock on hand.

Product Features

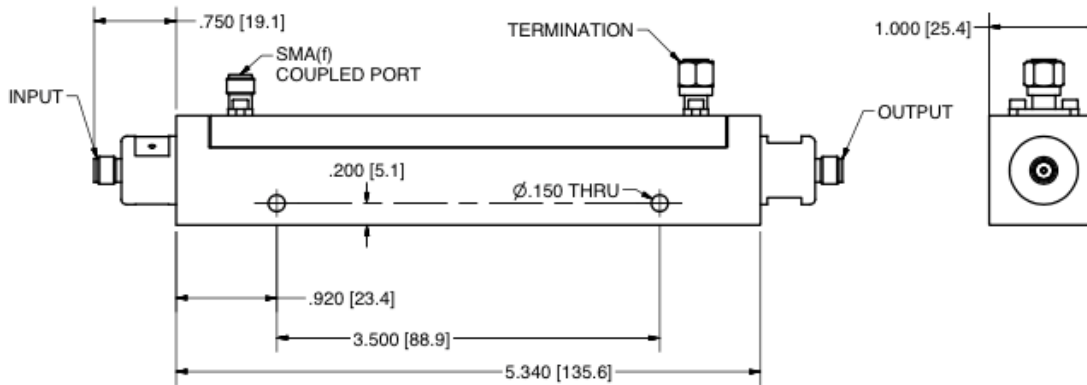
P1CP-SAF-R518G10W-LL-10 is a 50 Ohm broadband RF directional coupler. Operating over the frequency range 500 MHz up to 18 GHz, the coupler has SMA female (jack) connectors. Coupling is 10 dB and Directivity is 15 dB. This low loss broadband coupler has 1.6 dB of Insertion Loss and 20 dB Isolation. VSWR across the band is 1.5 max.



Mechanical And Environmental Specifications:

Parameter	Description	Notes
RoHS Compliance	Yes	

Drawing



Product Notes